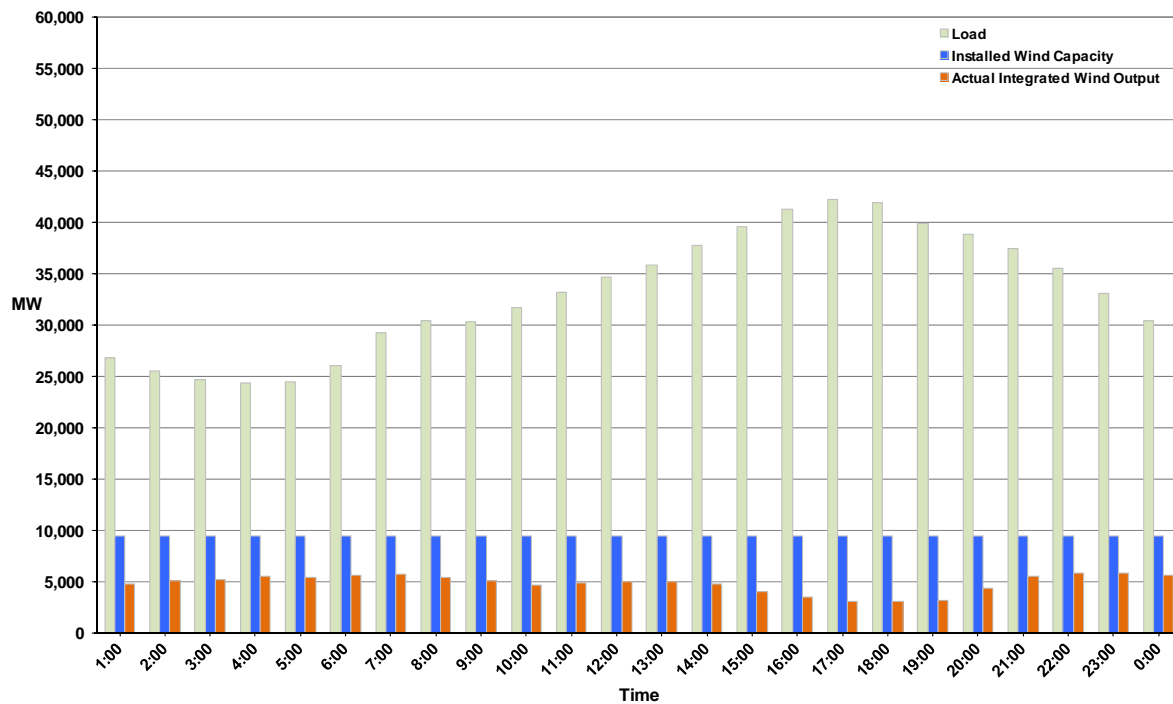




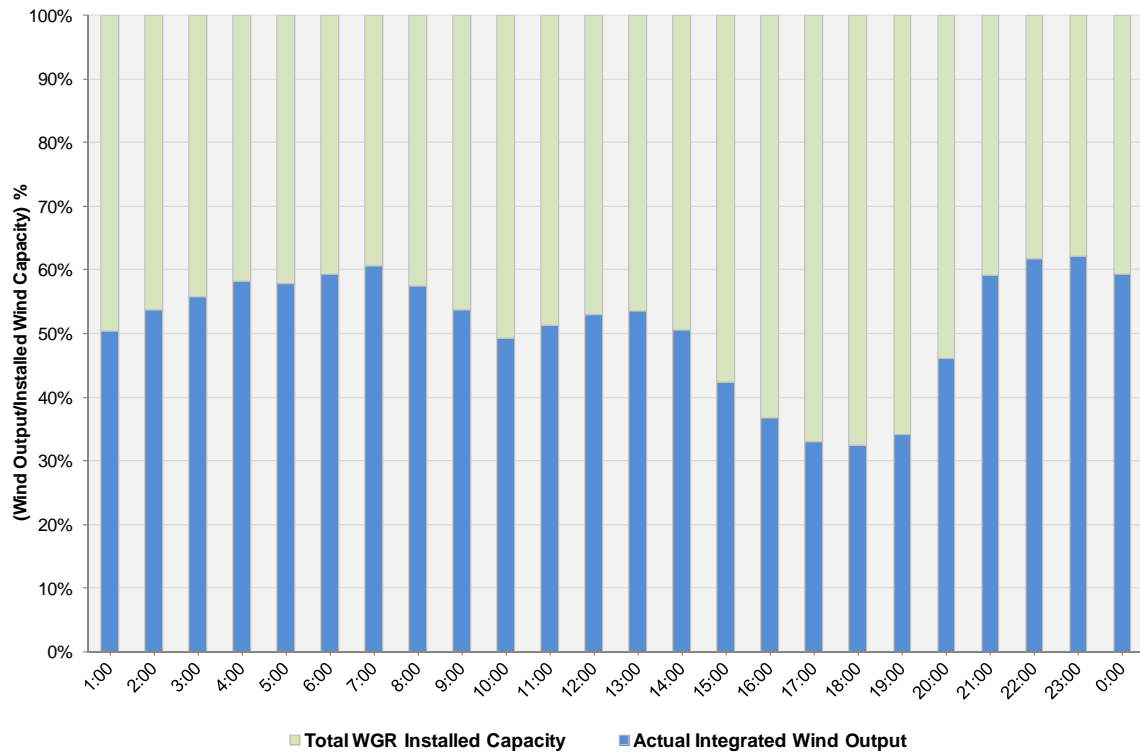
ERCOT Grid Operations Wind Integration Report: 10/14/11

Peak Load	42,269 MW
Load Peak Hour	17
Wind over Peak	3,106 MW
Wind Record 10/07/11	7,400 MW
Max Wind Value	5,998 MW
Wind Peak Time	21:58
Wind Integration %	17.36%

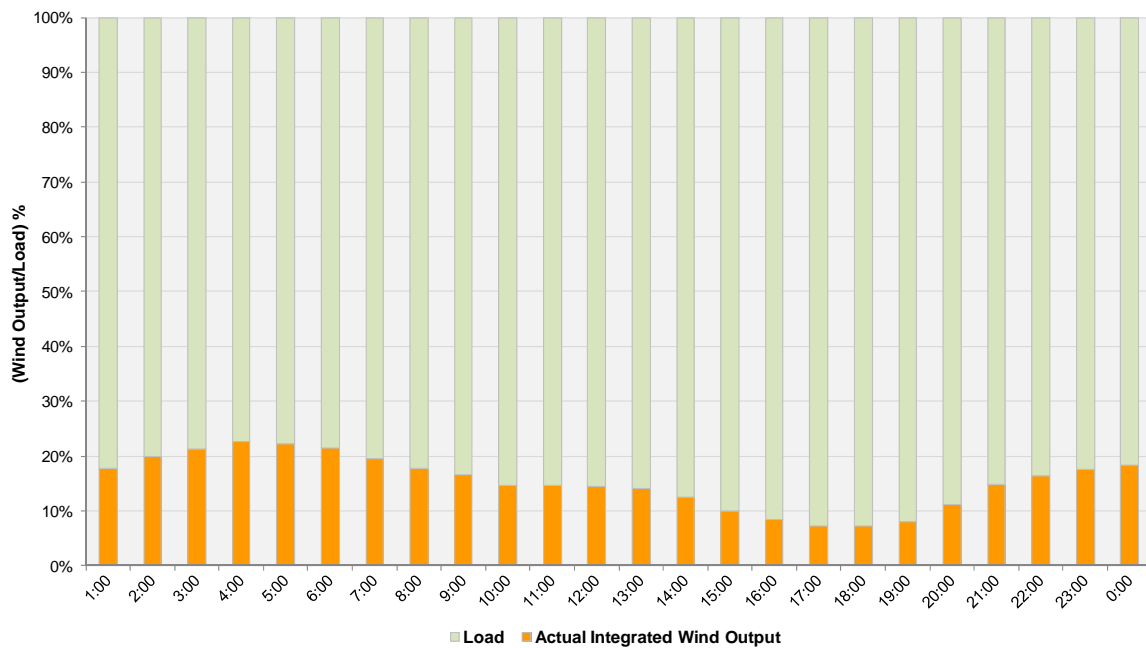
Hourly Average Actual Load vs. Actual Wind Output
10-14-2011



Actual Wind Output as a Percentage of the Total Installed Wind Capacity
10-14-2011



Actual Wind Output as a Percentage of the ERCOT Load
10-14-2011



ERCOT Load vs. Actual Wind Output 10/7/2011 - 10/14/2011

